

STREETADAPT

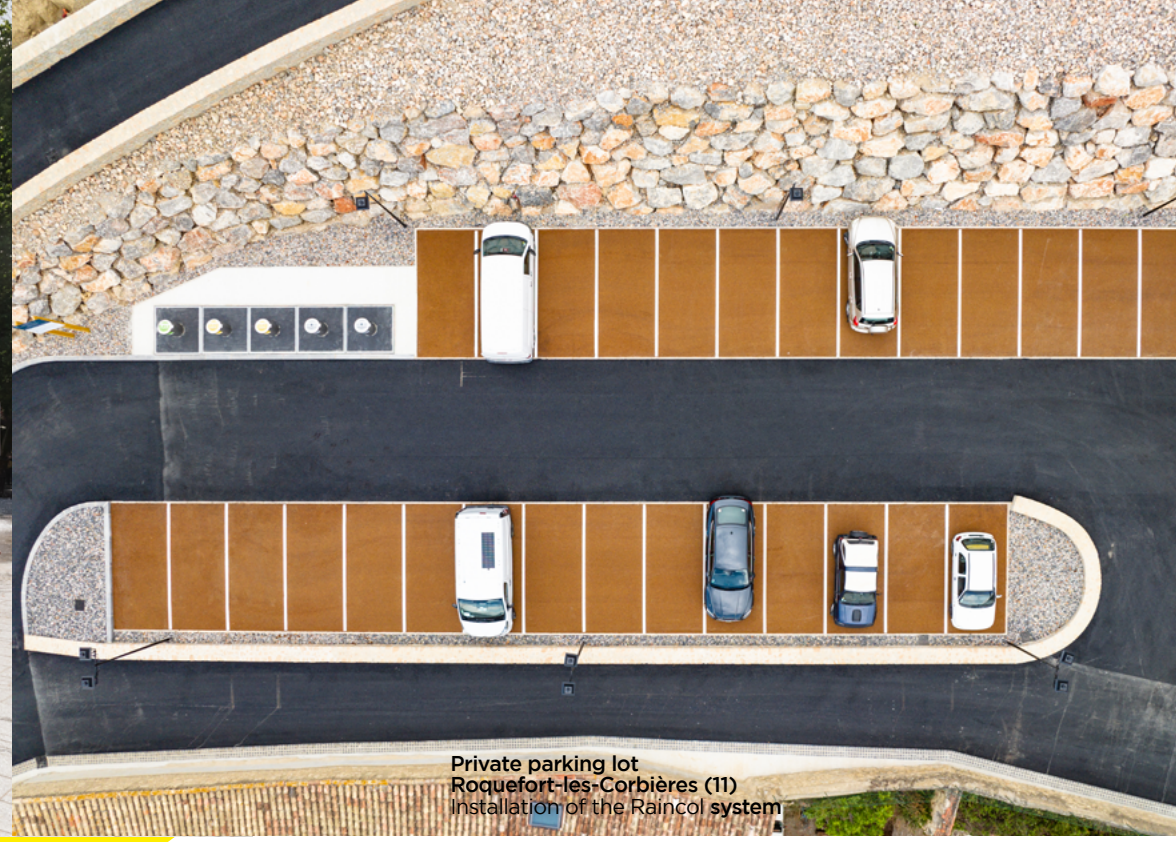


Colas partners with you **to develop urban spaces** that address the challenges of climate change.





High-quality urban development and creation of cooling islands
Nancy (54)



Private parking lot
Roquefort-les-Corbières (11)
Installation of the Raincol system



School courtyard
Clichy-la-Garenne (92)
Installation of a light-colored surface and permeable ground. Reuse of stored rainwater for irrigation.

Discover StreetADAPT

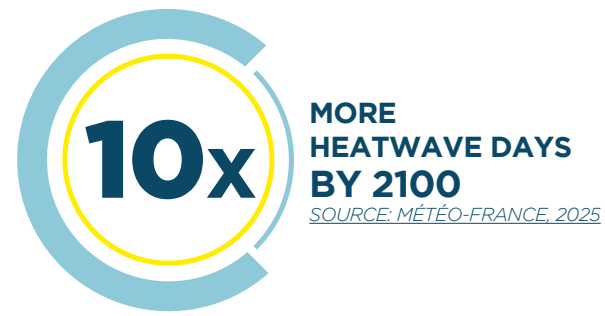
A tailor-made, scalable, and innovative approach to help build more resilient cities.

Urban overheating, increasingly frequent and intense rainfall, soil sealing, and loss of biodiversity — these are the issues that urban areas are facing today.

Colas stands by your side with a customized approach that delivers:

- Improved thermal comfort through the creation of cool islands.
- Integrated rainwater management (infiltration, storage, reuse).
- Increased integration of nature into the urban environment.

Our teams provide expert guidance and support in implementing high-performance solutions tailored to your local needs.



Customizable and targeted solutions
based on your needs and ambitions, tailored for your territory

- Pavement and surfaces
- Water
- Vegetation
- Shade

Dedicated expertise

- Performance measurement
- Microclimate modeling
- Urban ecological engineering

STREET ADAPT

Adapted products offered by Colas and its partners



School courtyard
Île-de-France
Creation of a vegetated area and installation of Colclair



Cycling path,
Lyon
Installation of Urbalith, a light-colored and permeable surface



CUSTOMIZABLE AND TARGETED SOLUTIONS



Pavement and surfaces

- Deconstruction and soil remediation.
- Permeable pavements.
- Pavements with optimized albedo.
- Amended inert soils as alternatives to natural topsoil.
- Soil protection and erosion control.



Vegetation

- Greening of urban areas (in open ground or through adapted systems).
- Installation of vegetated pavers and slabs.



Water

- Water storage systems (reservoir pavements, tanks, prefabricated structures, etc.) designed for infiltration or redistribution for natural ecosystems or specific uses (irrigation, street cleaning, etc.).
- Urban water feature enhancement and renaturation (canals, misting systems, reflecting pools, etc.).



Shade

- Consulting and implementation of shading systems (vegetation, urban furniture, etc.) to improve the overall performance of cooling solutions.



DEDICATED EXPERTISE



Performance Measurement

- Site configuration analysis.
- On-site instrumentation.
- Monitoring and data collection.



Microclimate Modeling

- Project design optimization through modeling of the impacts of planned developments.
- Visualization of expected performance outcomes.



Urban Ecological Engineering

- Implementation of ecological developments to preserve biodiversity and strengthen ecosystem resilience.



A RANGE OF ADAPTED PRODUCTS

Colas offers a range of exclusive products. Explore our full catalog at www.solutions-colas.com.

VEGECOL

A light-colored, aesthetically pleasing pavement with a reduced carbon footprint, also available in a permeable version. Vegecol is designed for plazas, pedestrian walkways, active mobility routes, and light local access roads.

URBALITH

A light-colored, aesthetic, permeable pavement with a low carbon footprint. Urbalith is suitable for environmentally sensitive areas (Natura 2000, ZNIEFF), and in urban contexts, it is ideal for active mobility routes, parking areas, and light vehicle traffic.

COLCLAIR

A bright and aesthetic pavement, also available in a permeable version. Colclair is suitable for all types of traffic.

RAINCOL

A permeable pavement specifically designed for parking areas built on permeable structures. It allows rainwater to infiltrate directly into the natural soil through the pavement.

ALBETOP

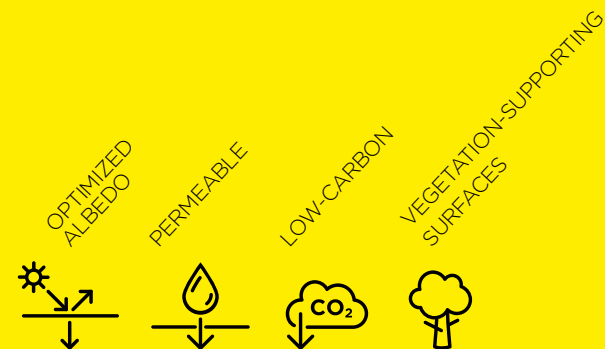
Aesthetic and cooling surface paint for urban spaces (plazas, walkways, roads, etc.). By increasing albedo, it contributes to lowering surface temperatures.

AXIROOF

Cooling roof paint that helps reduce indoor temperatures in buildings.

TECHNOSOLS

Constructed fertile soils made from inert soil and compost, used for urban landscaping.



Albedo refers to the capacity of a surface to reflect sunlight. Colas' surfaces with optimized albedo strike the right balance between thermal comfort and visual comfort.

EXAMPLES OF OUR STREETADAPT APPROACH IN ACTION (COMBINED SOLUTIONS)



PERFORMANCE-BASED CONTRACT

Ramatuelle (83)



- Microclimate modeling and on-site instrumentation
- Creation of shaded areas
- Installation of light-colored pavers with optimized albedo
- De-sealing around tree bases



R&D EXPERTISE CENTER

Lançon-Provence (13)



- Installation of Urbalith
- Permeable pavement structure
- Rainwater infiltration system
- Installation of above-ground vegetated planters
- Microclimate modeling
- Co-design workshop
- Full-scale on-site testing
- Instrumentation



COMMERCIAL STREET REDEVELOPMENT

Nevers (58)

- Installation of vegetated pavers
- Rainwater recovery system to supply a public fountain



PARKING LOT DEVELOPMENT

Les sables d'Olonne (85)

- Installation of Vegecol, a permeable surface with optimized albedo
- Creation of vegetated areas

#ColasConnectsUs

Colas, a subsidiary of the Bouygues Group, is a major player in the construction and maintenance of transportation infrastructure and urban development. Colas covers the entire value chain: from industrial production to service offerings, including construction work. Thanks to its local presence in some fifty countries on five continents, Colas achieved a consolidated revenue of 15.9 billion in 2024, 59% of which is outside France. With its 64,000 employees, a network of 2,000 operating units comprising 3,500 production units, and nearly 45,000 projects per year, Colas is the trusted partner of its customers. Colas maintains its pioneering, innovative and responsible spirit to connect people and foster the sustainable development of territories